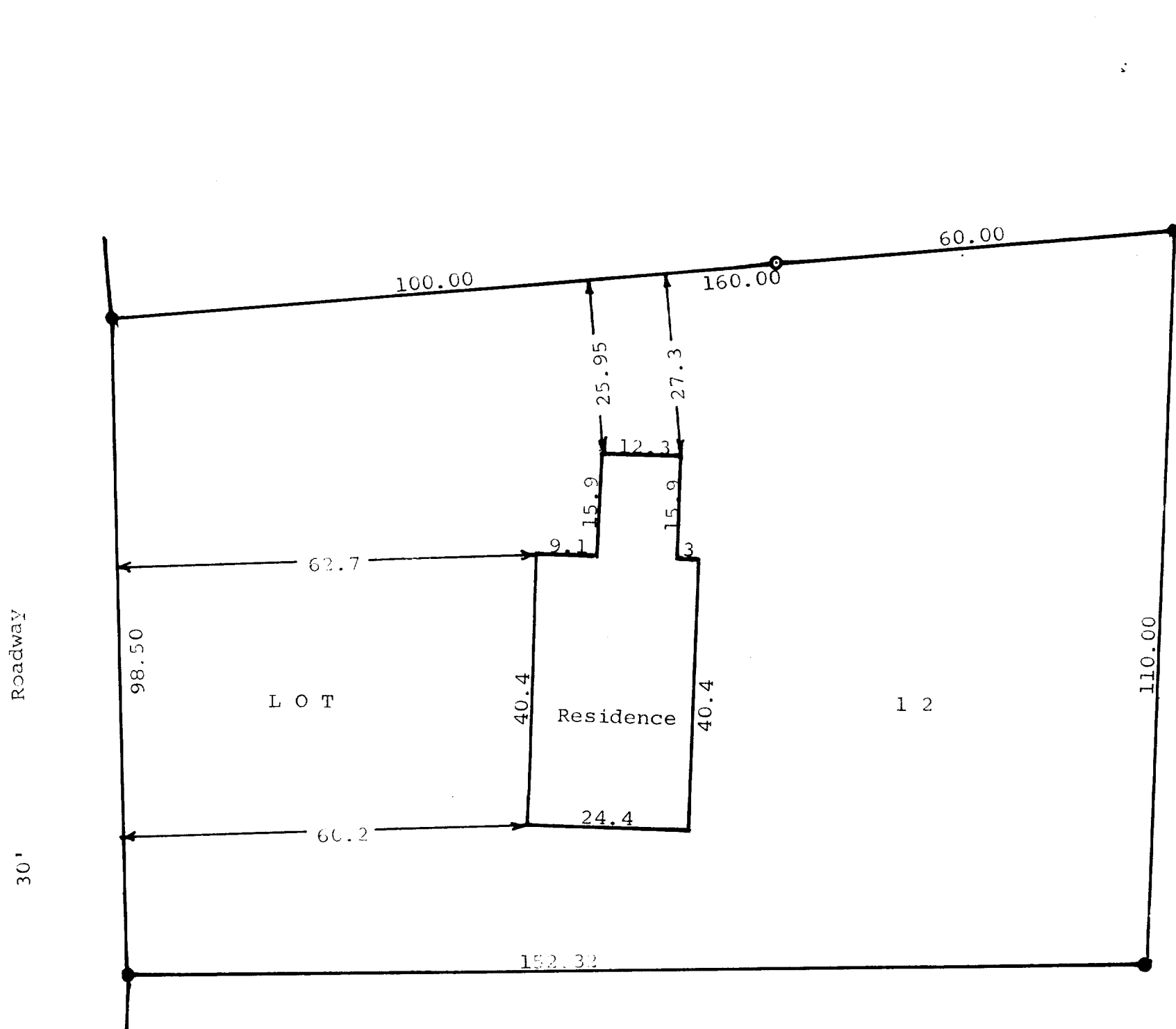


GEORGE T. DUNHAM
SURVEYING & SUBDIVIDING
DELAVER, WISCONSIN



Scale - 1" = 20'
○ = Iron Pipe
● = Concrete Monument

STATE OF WISCONSIN) SS
WALWORTH COUNTY)

I, George T. Dunham, Surveyor, do certify that
I have surveyed the property described as follows,
Lot 12, Block "H" in Unit No. 3 of Country
Club Estates located in the Village of
Fontana, Walworth County, Wisconsin
and that the above plat is an accurate survey and a
true representation thereof and correctly shows the
exterior boundary lines and location of buildings on
said property and the correct measurements thereof
August 31, 1965

George T. Dunham
George T. Dunham, Surveyor

5-87